

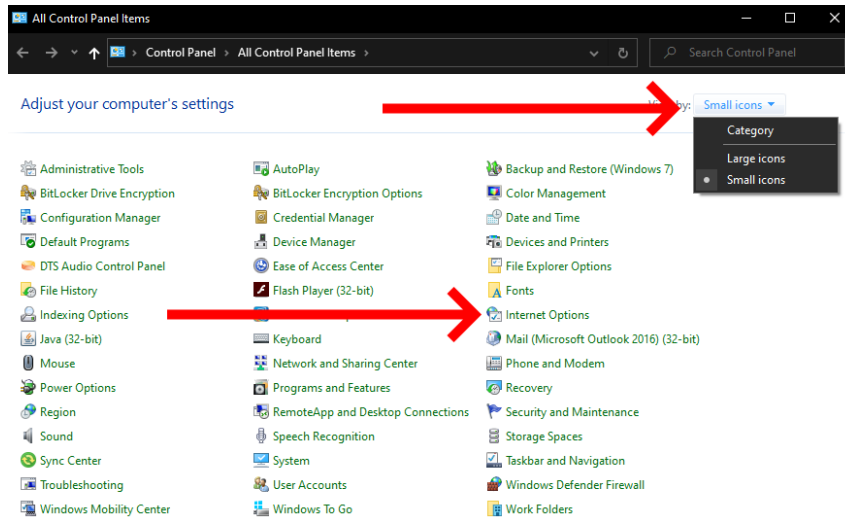
No Internet Access

If you have brought your laptop back into school and find no or wrong Internet access, please check your proxy settings as follows.

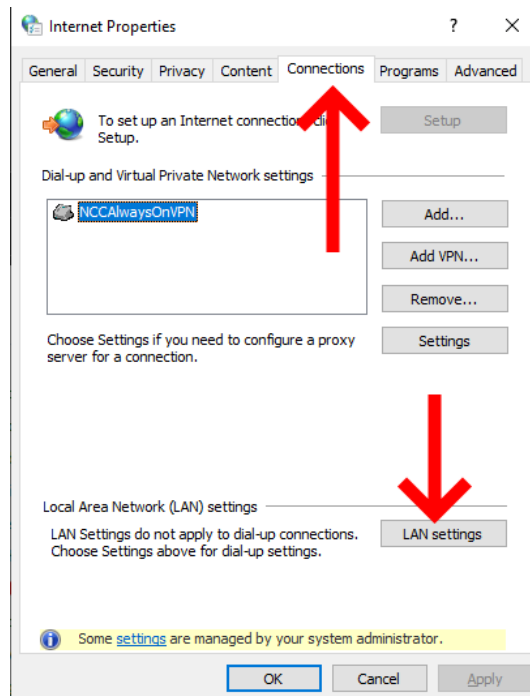
Click the start button (usually bottom right of the screen) or tap the Windows key on your keyboard, type "control", then look for Control Panel and select this.

Top right where it says, "View by", change from Category to Small icons.

Find and select "Internet Options"



In Internet Options, select the Connections tab across the top then select the LAN settings button towards the bottom.



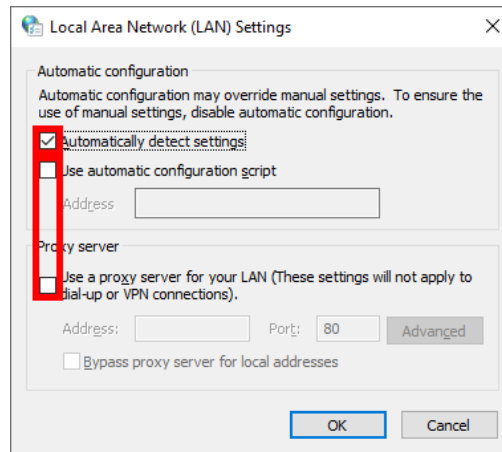
The correct option will depend upon your schools setup, but is safe to try them in turn. You may wish to keep these instructions handy.

No Internet Access

For automatic use

This will typically provide pupil-level filtering if either Transparent Proxy or Proxy Auto Detection is set up, it's also the correct option for use on home broadband or tethered to a mobile device.

Untick the bottom two boxes (Use automatic configuration script, use a proxy server for your LAN) and tick the top one (Automatically detect settings), should look like this:

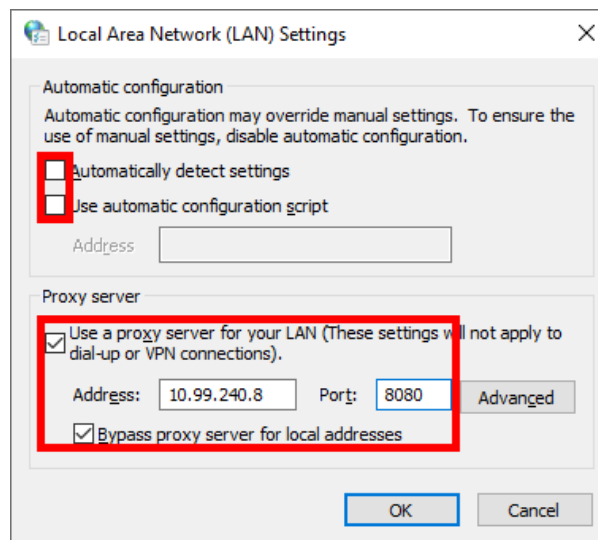


Then click OK, OK again, and possibly restart your browser.

Manual default/8080 use.

This will provide pupil-level filtering and should work at all updata-connected schools, though will not provide any enhanced level of access, nor will it work for home broadband or mobile use.

Untick the top two boxes (automatically detect settings and use automatic configuration script), tick the third and fourth (use a proxy server for your LAN and bypass proxy server for local addresses), and enter 10.99.240.8 into the Address box and 8080 into the Port box.



Then click OK, OK again, and possibly restart your browser.

No Internet Access

Manual Level2/8081 use

This will provide staff-level filtering, and works at Updata-connected schools who have requested Level2 filtering. It will typically provide access to additional websites, eg YouTube and Vimeo which may not be available to pupils. However, it will not work for home broadband or mobile use.

Untick the top two boxes (automatically detect settings and use automatic configuration script), tick the third and fourth (use a proxy server for your LAN and bypass proxy server for local addresses), and enter 10.99.240.8 into the Address box and 8081 into the Port box. Some schools may additionally use ports 8082 through 8085 for differing groups of staff; please check with your local ICT support if you think this applies to you.

